

MONTHLY MEMBERSHIP PROGRESS REPORT

LOCATION INDIA

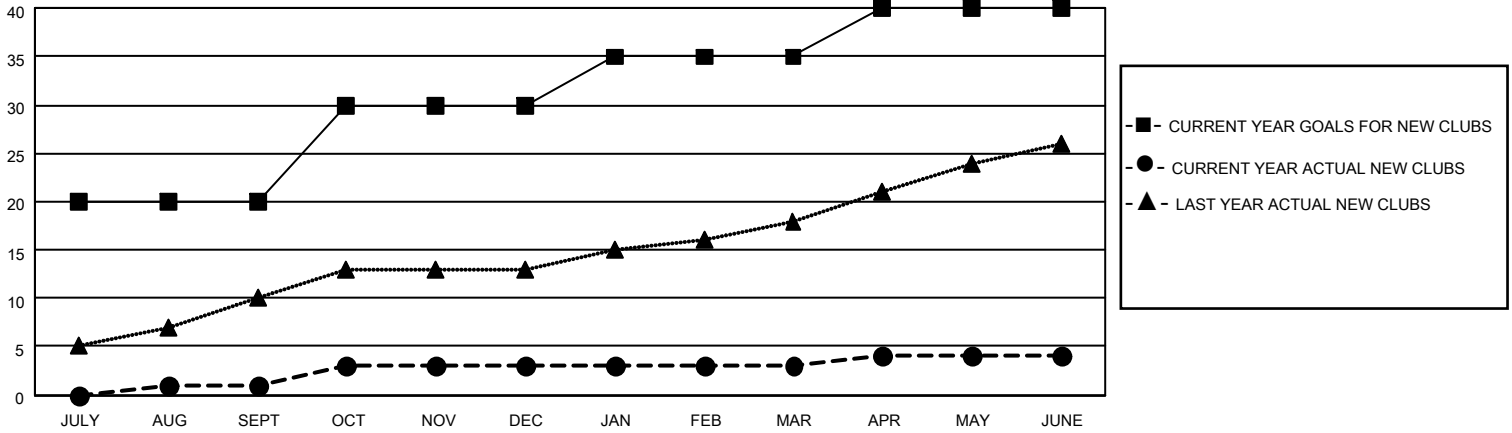
District 317 E

Results as of: 6/30/2023

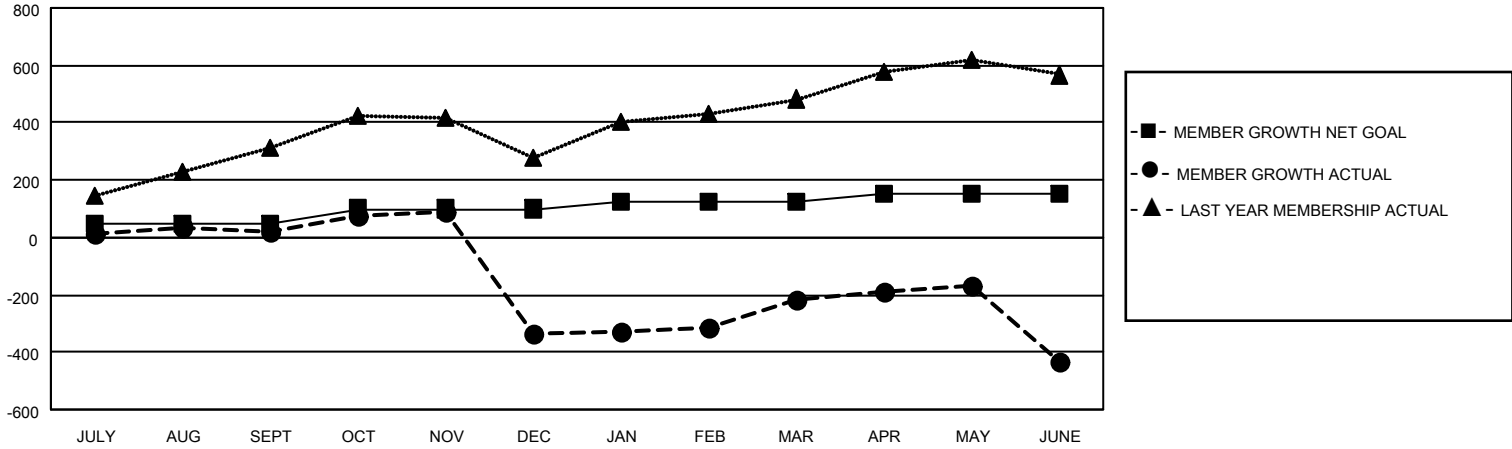
Clubs			
RESULTS FOR 2022-2023			
QUARTER	NEW CLUB GOAL	NEW CLUBS	DROPPED CLUBS
JULY/AUG/SEPT	20	1	2
OCT/NOV/DEC	10	2	11
JAN/FEB/MAR	5	0	0
APR/MAY/JUNE	5	1	5

Members			
RESULTS FOR 2022-2023			
QUARTER	MEMBER GROWTH NET GOAL	MEMBER GROWTH ACTUAL	DROPPED MEMBERS ACTUAL (including transfers)
JULY/AUG/SEPT	50	108	85
OCT/NOV/DEC	50	94	448
JAN/FEB/MAR	25	127	8
APR/MAY/JUNE	25	87	304

GOALS AND ACTUAL NEW CLUBS CUMULATIVE



GOALS AND ACTUAL MEMBERS CUMULATIVE



DROPPED CLUBS: 18

47 CLUBS OF 92 ADDED 1 OR MORE NEW MEMBERS

GENDER DISTRIBUTION

MALE	1,897 (74.51%)
FEMALE	649 (25.49%)
NON BINARY	0 (0.00%)
PREFER NOT TO ANSWER	0 (0.00%)

DROPPED MEMBERS

[CLICK HERE FOR CUMULATIVE MEMBERSHIP DATA](#)

DECEASED	8
CLUB CANCELLED	560
OTHER	277
TOTAL	845

TOTAL FAMILY UNIT MEMBERS	686
FAMILY MEMBERS PAYING HALF DUES	394